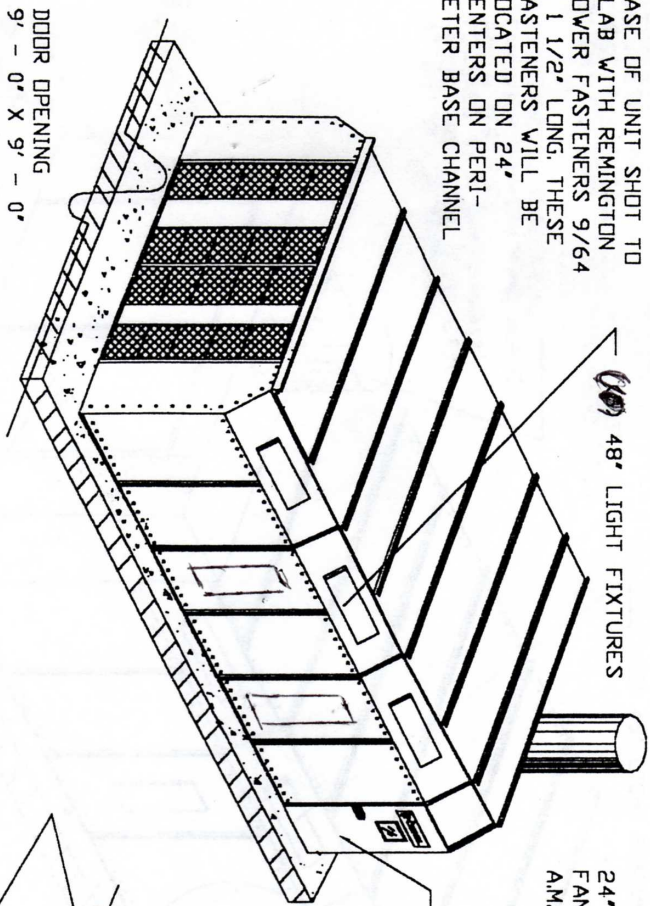


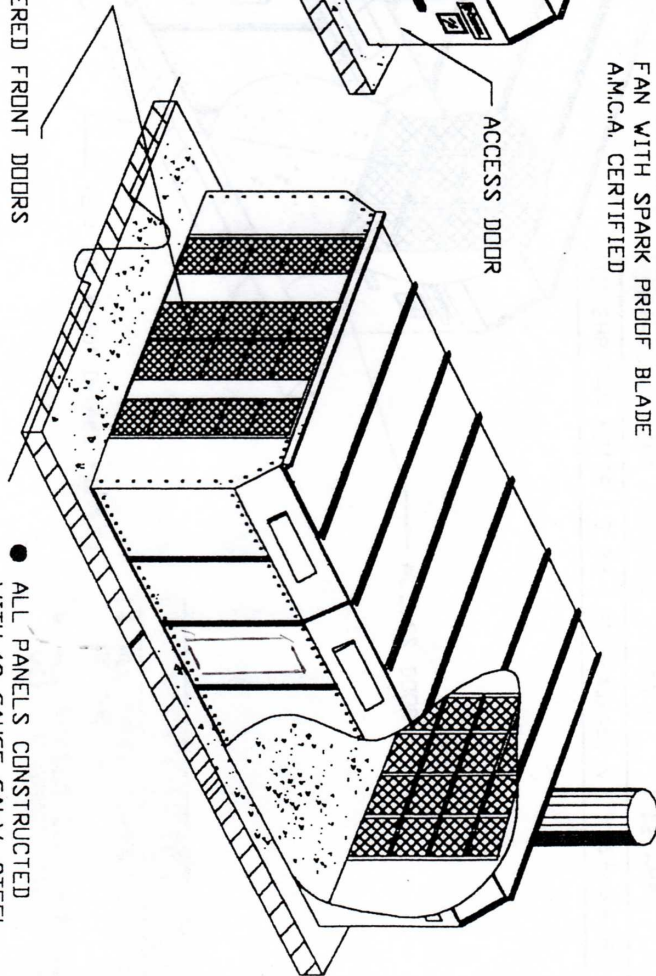
BASE OF UNIT SHOT TO  
SLAB WITH REMINGTON  
POWER FASTENERS 9/64  
X 1 1/2" LONG. THESE  
FASTENERS WILL BE  
LOCATED ON 24"  
CENTERS ON PERI-  
METER BASE CHANNEL



24" DIAMETER TUBE-AXIAL  
FAN WITH SPARK PROOF BLADE  
AMCA CERTIFIED

ACCESS DOOR

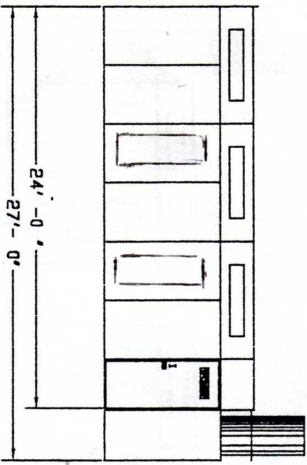
FILTERED FRONT DOORS



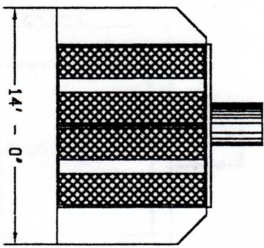
ALL PANEL FLANGES  
ON OUTSIDE OF UNIT

DOOR OPENING  
9' - 0" X 9' - 0"

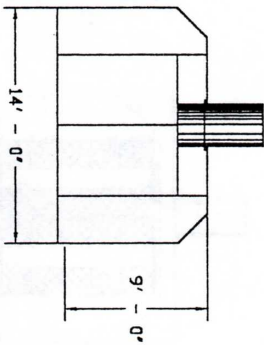
POWERED BY A 3HP, 3 PHASE  
MOTOR, PROVIDING 10,000 C.F.M.



SIDE VIEW



FRONT VIEW



BACK VIEW

- ALL PANELS CONSTRUCTED WITH 18 GAUGE GALV. STEEL
- BASE OF UNIT MOUNTED ON GALVANIZED FLOOR RAILS
- ACCESS DOOR CAN BE LOCATED ON EITHER SIDE OF THE UNIT
- INSIDE PANEL SEAMS SMOOTH
- BASE OF DOORS SEALED WITH RUBBER STRIPS.
- LIGHT FIXTURES MOUNTED ON 1/4" CLEAR TEMPERED GLASS
- BRIXON LATCHES ON DOORS
- 16 CELL ARRESTOR CHAMBER EACH CELL 20" X 20" X 2"
- UNIT FACTORY BUILT TO MEET OR EXCEED, BCGA, DSHA, & NFPA - 33



SPRAY ENCLOSURE TECHNOLOGIES  
100 - A EAST MAIN STREET  
ONTARIO, CALIFORNIA 91761

ECONOMY FRONT FLOW  
AUTOMOTIVE SPRAY BOOTH  
MODEL ST91424EFF

JOB NAME DATE

3/13/98